



R-C Thermal Model Parameters

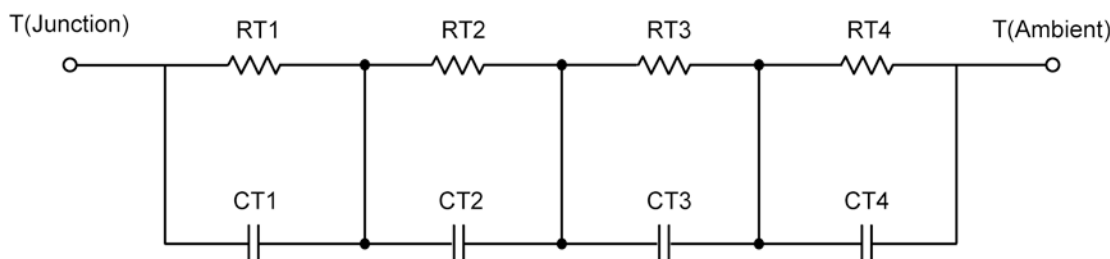
DESCRIPTION

The parametric values in the R-C thermal model have been derived using curve-fitting techniques. These techniques are described in "[A Simple Method of Generating Thermal Models for a Power MOSFET](#)"[1]. When implemented in P-Spice, these values have matching characteristic curves to the Single Pulse Transient Thermal Impedance curves for the MOSFET.

R-C values for the electrical circuit in the Foster/Tank and Cauer/Filter configurations are included.

Note:
For a detailed explanation of implementing these values in P-SPICE, refer to [Application Note AN609 Thermal Simulations Of Power MOSFETs on P-SPICE Platform](#).

R-C THERMAL MODEL FOR TANK CONFIGURATION



R-C VALUES FOR TANK CONFIGURATION			
Thermal Resistance (°C/W)			
Junction to	Ambient	Case	Foot
RT1	N/A	82.1009 m	N/A
RT2	N/A	500.5937 m	N/A
RT3	N/A	288.4124 m	N/A
RT4	N/A	128.8929 m	N/A
Thermal Capacitance (Joules/°C)			
Junction to	Ambient	Case	Foot
CT1	N/A	73.9104 m	N/A
CT2	N/A	9.6627 m	N/A
CT3	N/A	1.7529 m	N/A
CT4	N/A	139.9932 m	N/A

This document is intended as a SPICE modeling guideline and does not constitute a commercial product data sheet. Designers should refer to the appropriate data sheet of the same number for guaranteed specification limits.



R-C THERMAL MODEL FOR FILTER CONFIGURATION



R-C VALUES FOR FILTER CONFIGURATION			
Thermal Resistance (°C/W)			
Junction to	Ambient	Case	Foot
RF1	N/A	500.2929 m	N/A
RF2	N/A	457.8845 m	N/A
RF3	N/A	34.6080 m	N/A
RF4	N/A	7.2146 m	N/A
Thermal Capacitance (Joules/°C)			
Junction to	Ambient	Case	Foot
CF1	N/A	1.5966 m	N/A
CF2	N/A	12.9270 m	N/A
CF3	N/A	17.5106 m	N/A
CF4	N/A	79.7344 m	N/A

Note: NA indicates not applicable

Reference:

[1] "A Simple Method of Generating Thermal Models for a Power MOSFET" by Wharton McDaniel and Kandarp Pandya. IEEE / SEMITHERM 2002

